

Spin a WORD FAMILY

Blends &
Digraphs



Name: _____

Spin a Blend

Directions Spin the spinner and say the name of the picture. Find the word below. Use the color code on the spinner to color the word.

clip	clap	club
clock	clam	clip
club	clip	clam
clap	club	clock

The Printable Princess

Created by The Printable Princess

Table of Contents: Blends & Digraphs

Word Family	Page Number
bl-	<u>6</u>
cl-	<u>8</u>
fl-	<u>10</u>
gl-	<u>12</u>
pl-	<u>14</u>
sl-	<u>16</u>
br-	<u>18</u>
cr-	<u>20</u>
dr-	<u>22</u>

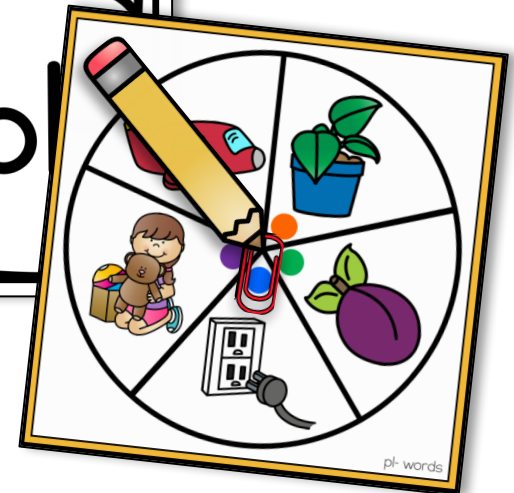
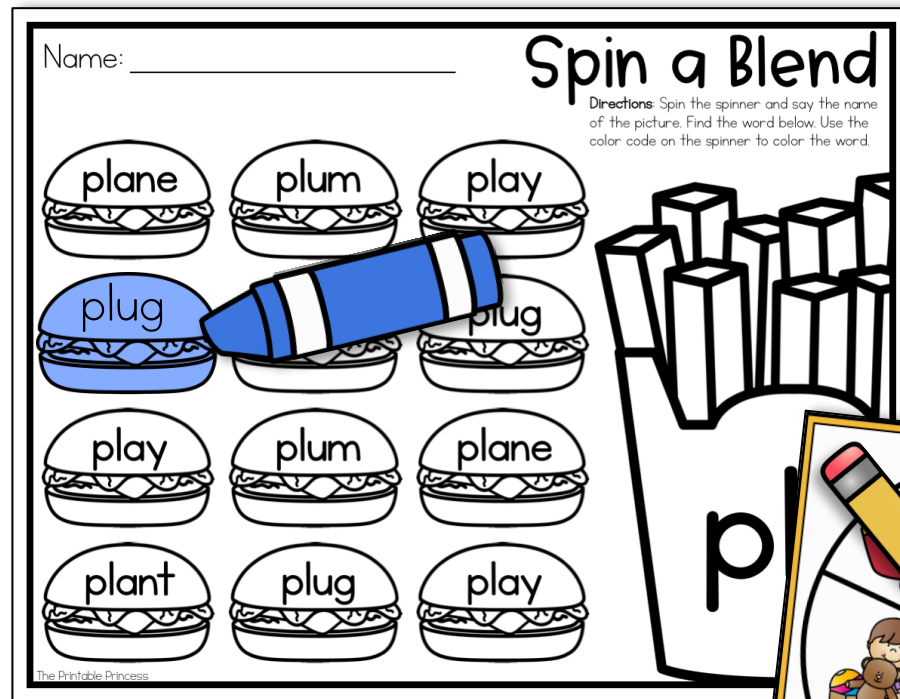
Word Family	Page Number
fr-	<u>24</u>
gr-	<u>26</u>
pr-	<u>28</u>
tr-	<u>30</u>
sc-	<u>32</u>
sk-	<u>34</u>
sm-	<u>36</u>
sn-	<u>38</u>
sp-	<u>40</u>

Word Family	Page Number
st-	<u>42</u>
sw-	<u>44</u>
ch-	<u>46</u>
sh-	<u>48</u>
th-	<u>50</u>
wh-	<u>52</u>
kn-	<u>54</u>
qu-	<u>56</u>

About this Activity...

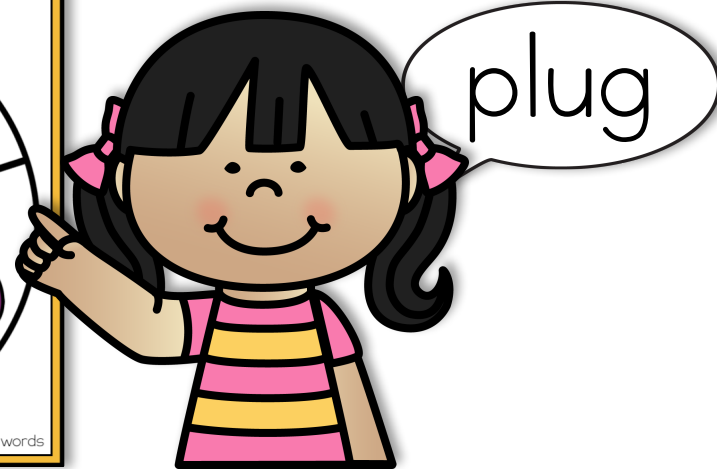
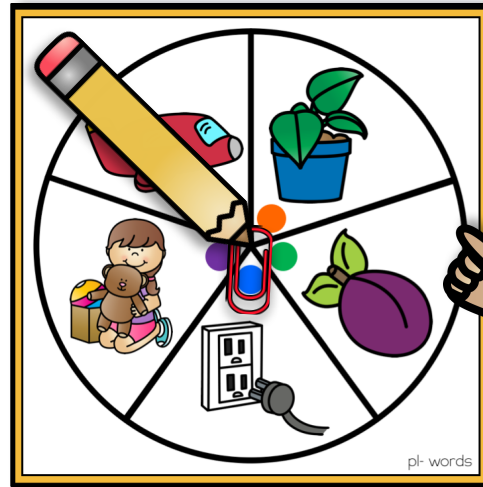
Prep Work: Print, cut out, and laminate the word family spinner. Print and laminate the “I Can” visual directions page. Print the corresponding “Spin a Blend” recording sheet. Students will need a paper clip and a pencil to make a spinner. Students can use crayons, color pencils, markers, or bingo dabbers to mark their answers. **Teacher Tip:** You could also slide the recording sheet in a page protector and have students use plastic math cubes to mark their answers.

Directions: Students will spin the spinner and say the name of the word family picture. They will find the corresponding word on their paper and color the picture using the color code on the spinner. They will continue to color and spin until all of the pictures have been colored.

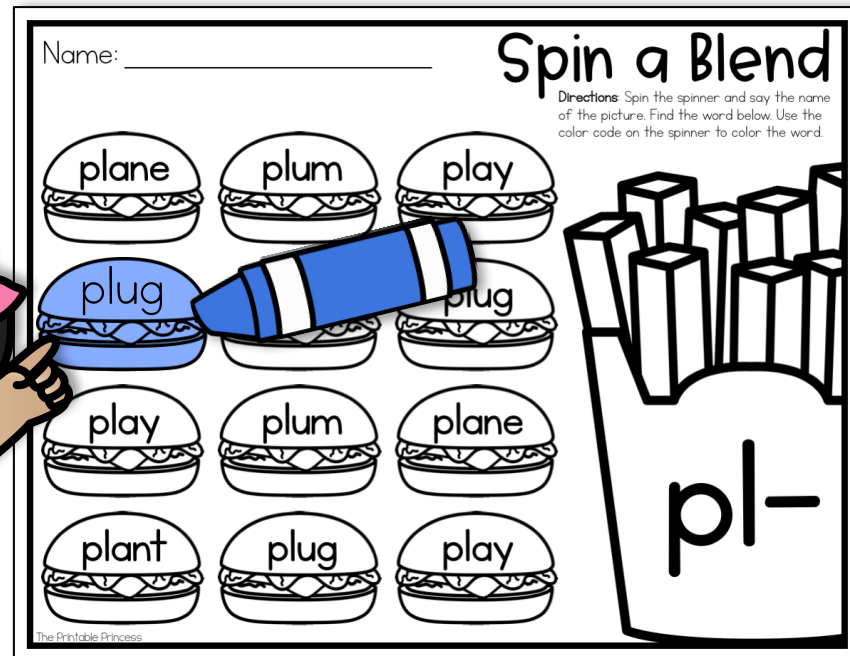


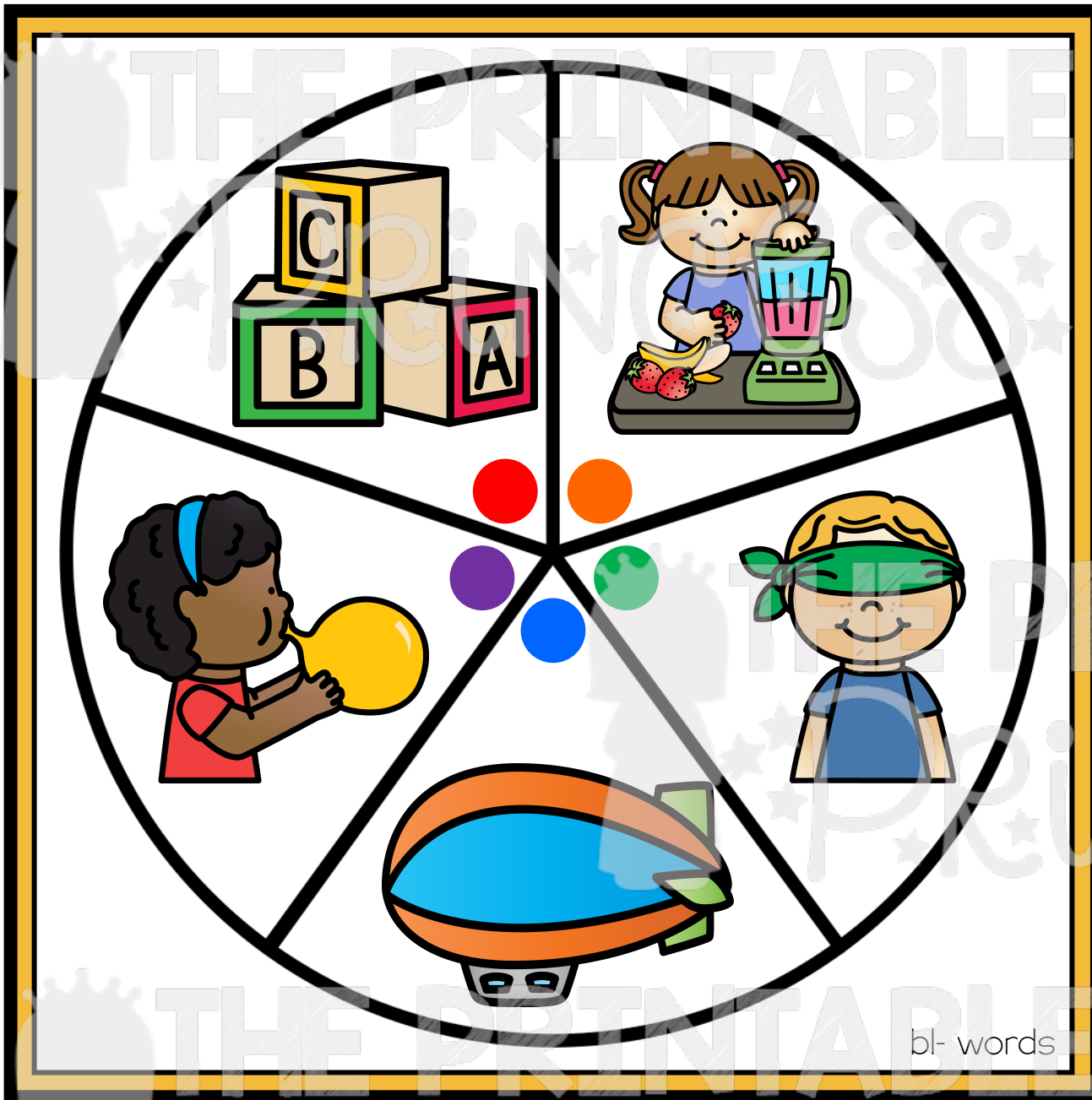
I Can...

1. Spin the spinner and say the name of the picture.



2. Find the word on the paper. Color the picture using the color code on the spinner.





blocks

blend

blind

blimp

blow

bl- words

Name: _____

Spin a Blend

Directions: Spin the spinner and say the name of the picture. Find the word below. Use the color code on the spinner to color the word.

