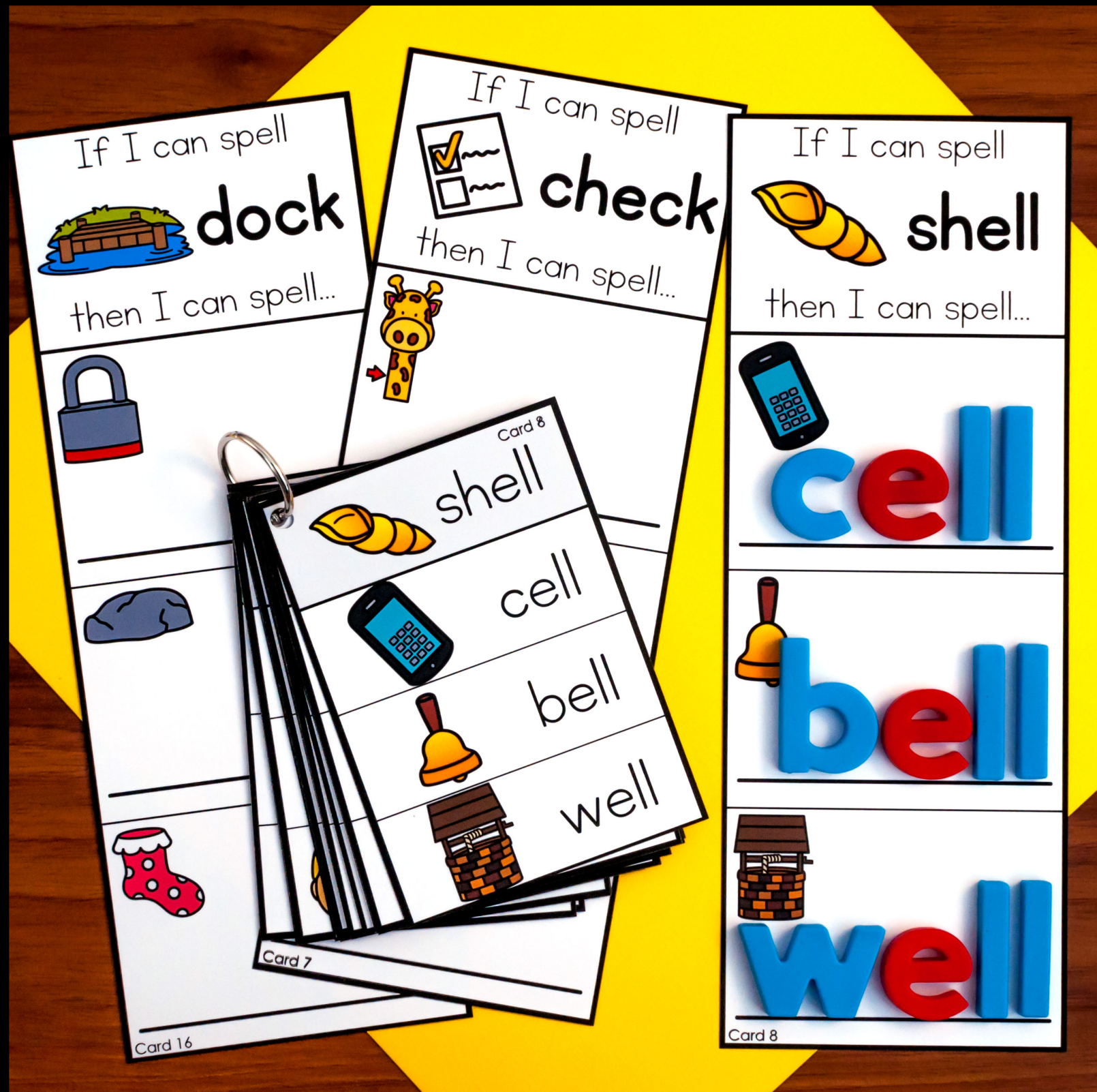


If I Can Spell...

Short Vowel Word Families



About this Activity...

What's Included:

- 7 "I Can" Visual Directions Cards (pg 4 – 10)
- 25 Word Family Activity Cards. (pg 11 – 22)
- 25 Smaller Self Correcting Cards (pg 23 – 28)
- Optional Front Covers (pg 29)
- 6 Options Recording Sheets (pg 30 – 35)

Prep Work: Print, cut apart, and laminate the activity cards and the corresponding "I Can" visual direction pages. Print, cut apart, and laminate "self correcting" cards. You could punch a hole into the upper left corner of the self correcting cards and put them on a binder ring to keep them together. The number on the bottom of the activity card corresponds to the number on the top of the self-checking card.

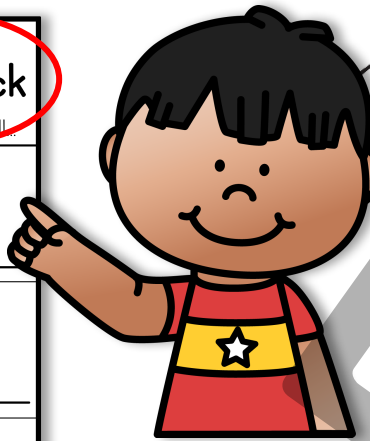
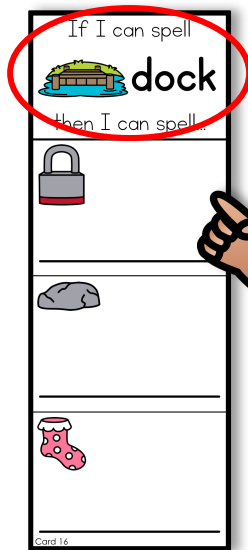
Optional: print a recording sheet to hold students accountable for their work. Students will need dry erase markers or magnetic letters for this activity.

Directions: Students will select an activity card. They will say the name of the picture at the top of the card. They will change the beginning sound to make a new word and record the new word on the line.



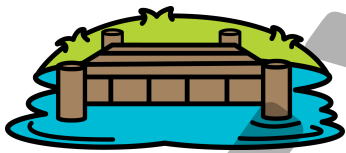
I Can...

Read the word at the top of the card.

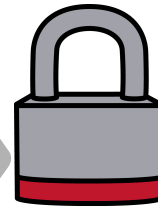
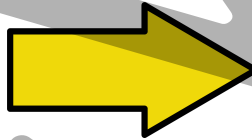


dock

Change the beginning sound to make a new word to match the picture.

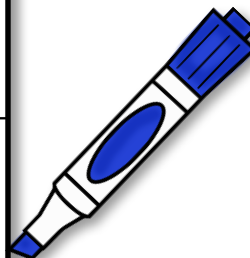
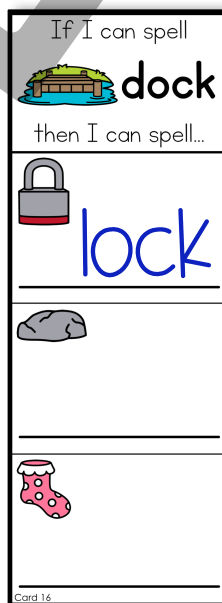


dock



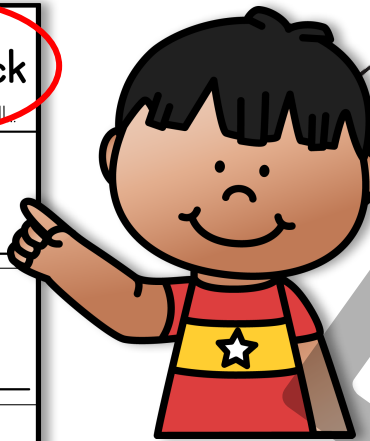
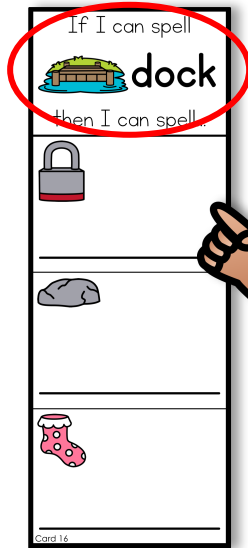
lock

Write the new word on the card.



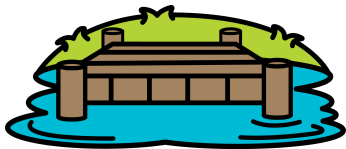
I Can...

Read the word at the top of the card.

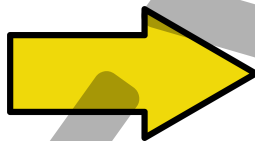


dock

Change the beginning sound to make a new word to match the picture.



dock



lock



Color the space to match the word family.

Name: _____

Directions: Color the squares below to show the short vowel word families you worked on.

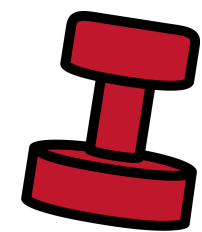
If I Can Spell...

ack	all	amp	and
ant	ash	eck	ell
end	est	ick	ill
ing	ink	ish	ock
op	old	uck	ump
ung	unk	ush	



The Printable Princess

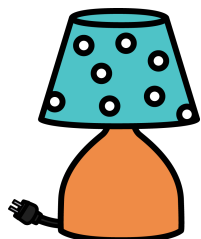
- If I can spell

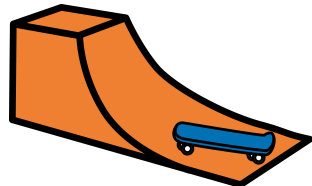


stamp



then I can spell...







Card 3

- If I can spell



band

then I can spell...

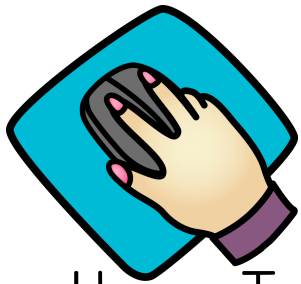






Card 4

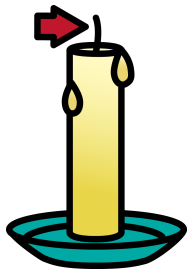
- If I can spell

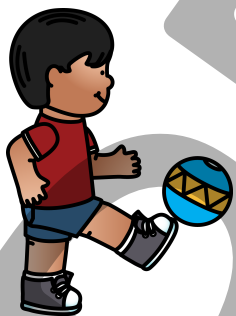


click

then I can spell...

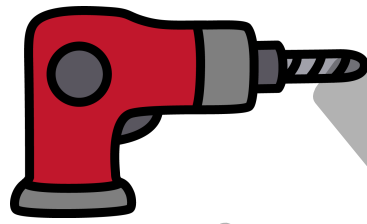






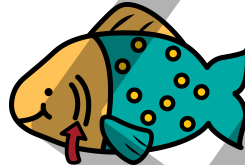
Card 11

- If I can spell



drill

then I can spell...

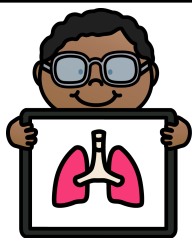





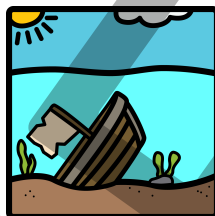


Card 12

• If I can spell
 **sung**
then I can spell...



• If I can spell
 **junk**
then I can spell...



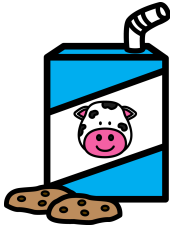


Card 1

rack



stack



snack

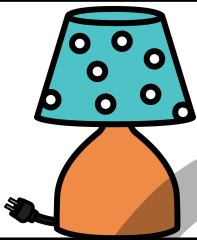


back



Card 3

stamp



lamp



ramp

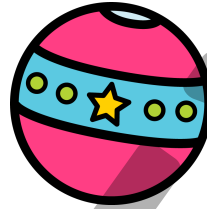


camp



Card 2

small



ball



call

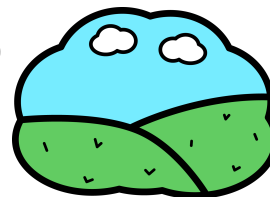


fall



Card 4

band



land



hand

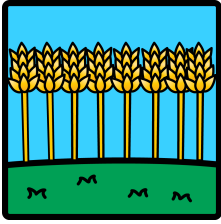


sand



Card 17

shop



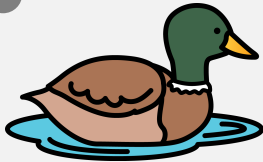
crop



stop



chop



Card 19

duck



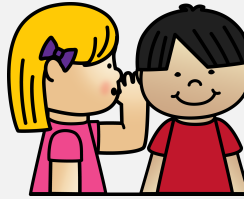
tuck



puck



buck



Card 18

told



cold



fold



old



Card 20

stump



jump



pump



dump

If I Can SPELL

SHORT VOWELS

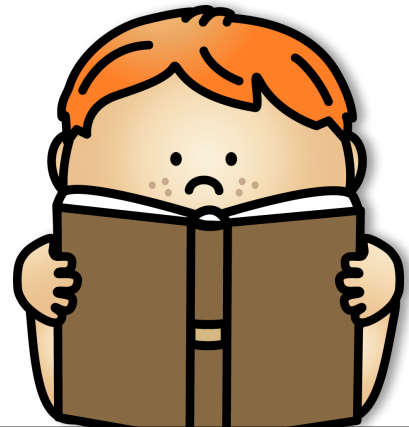


Optional Covers for Activity:

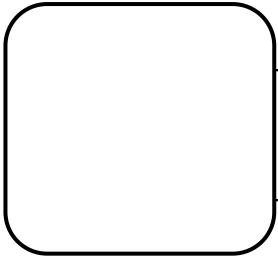
You can punch a hole in the upper left corner of each card and put them on a metal ring. Use these cards as the front covers.

If I Can SPELL

SHORT VOWELS



If I can spell

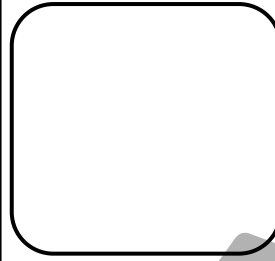


then I can spell...

Handwriting practice lines consisting of three sets of three horizontal lines (top solid, middle dashed, bottom solid).

Directions: Record the words from the card on the lines. Draw a picture to illustrate the words.

If I can spell



then I can spell...

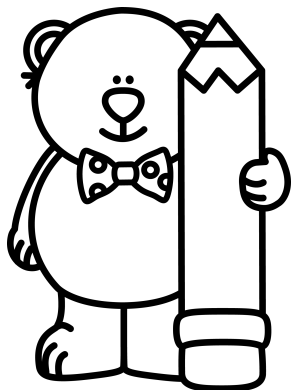
Handwriting practice lines consisting of three sets of three horizontal lines (top solid, middle dashed, bottom solid).

Directions: Record the words from the card on the lines. Draw a picture to illustrate the words.

Name: _____

I Can Write

Directions: On the top lines write the words from the "If I Can Spell" card. Pick three words and use them in sentences on the lines below.



Handwriting practice lines (first section) with solid top and bottom lines and a dashed middle line.

Handwriting practice lines (second section) with solid top and bottom lines and a dashed middle line.

Handwriting practice lines (third section) with solid top and bottom lines and a dashed middle line.